

New Paltz

January 2025Central School District

CAPITAL PROJECT VOTE

Improvements Proposed on Ballot January 16th

After nearly two years of community input and a thorough analysis of building conditions, the New Paltz Central School District has a capital project on the ballot for Thursday, January 16. Voters will decide on three propositions to make capital improvements:

- PROPOSITION #1** includes improvements for safety and energy efficiency, and updates that are essential/appropriate for daily school operations.
- PROPOSITION #2** is related to athletic facilities, an auditorium audio/visual system, and air conditioning for large group spaces.
- PROPOSITION #3** involves the building of an Aquatics Center located on the High School campus.

Because Proposition #1 projects are considered highly essential, Proposition #1 must pass in order for Propositions #2 or #3 to pass. Proposition #2 does not depend on Proposition #3 passing and Proposition #3 does not depend on Proposition #2 passing.

This newsletter contains details of all three propositions, and is just one way NPCSD is helping residents understand the ballot measures before voting. Additionally, a postcard was mailed to all New Paltz addresses; the website newpaltz.k12.ny.us/capitalproject is a hub of information; and several in-person opportunities gave people a chance to ask questions.

TWO MORE COMMUNITY INFORMATION/Q&A SESSIONS ARE SCHEDULED BEFORE THE PUBLIC VOTE (SEE PAGE 8).



NON-PROFIT ORG
US POSTAGE PAID
NEWBURGH, NY 12550
PERMIT No. 145
MAN-WSS

New Paltz
Central School District
196 Main Street, New Paltz, New York 12561
Tel. (845)256-4020 • Fax (845)256-4025

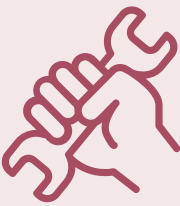
TO POSTAL CUSTOMER

www.newpaltz.k12.ny.us

TABLE OF CONTENTS	
Page 2	School by School
Page 4	Common Questions
Page 5	Aquatics Center
Page 7	Financial Breakdown

Highlights of PROPOSITION #1

- Upgrades to LED lighting throughout the district would boost energy efficiency. This upgrade can reduce electric consumption by 50%.
- Window and door repair/replacements at the High School and Lenape Elementary would address age-related problems.
- Roof improvements at Lenape Elementary and the Bus Garage would protect building interiors.
- At the High School, new home bleachers outside would meet current manufacturing standards and unused locker room showers inside would be converted to more practical use. Boiler room upgrades would replace older equipment to provide a more dependable system.
- Varied proposed improvements include a new water storage tank at Lenape Elementary; grease trap replacements there and at Duzine Elementary; restroom renovations and exterior stair repairs at the Middle School; and necessary upgrades to science lab equipment and ceiling tiles at the High School.



Highlights of PROPOSITION #2

- Synthetic turf at Floyd Patterson Athletic Field would expand the current grass football field's use in two ways. It would be configured for football, lacrosse and soccer for more equitable access. It would also be more resistant to heavy-duty use and wet weather.
- At that field: The 8-lane running track would be rebuilt; new goalposts and a scoreboard would be erected; and security and field lighting would be installed.
- A new "comfort station" would be built near the existing field and available to users of that field and the Aquatics Center (which is the sole focus of Proposition #3). It would include restrooms; areas for concessions and food pantry; and storage areas for building/grounds and sports equipment.
- Nearby: Drainage and irrigation would be improved for the baseball, softball and competition fields. Six new tennis courts would be built on the other side of the High School, ending the practice of busing players to SUNY New Paltz courts.
- Air conditioning would be added to auditoriums at the Middle School and High School. Also at the Middle School, that room's audio/visual system would be replaced.
- At the Middle School: Demolish three tennis courts and replace them with a grassy area for student recreation. The other three tennis courts at the middle school would be resurfaced for tennis play and pickleball.



Highlights of PROPOSITION #3

Aquatics Center at the High School including:

- An 8-lane, competition-sized pool.
- Bleachers, locker rooms and restrooms.
- New drop-off lane for vehicular traffic.



READ MORE ON PAGE 5

UNDERSTANDING THE BALLOT

Bond Proposition #1

That the Board of Education of New Paltz Central School District, in the County of Ulster, New York (the “District”), is hereby authorized to construct alterations and improvements to District buildings and sites (the “Project”), substantially as described in a plan prepared by the District with the assistance of H2M Architects & Engineers, (the “Plan”), which plan is on file and available for public inspection at the office of the Assistant Superintendent for Business; including roof, window, door and ceiling tile replacements and/or upgrades; LED lighting upgrades; lavatory upgrades and improvements; water storage tank replacement; locker room, gas bib, boiler and exterior staircase improvements and/or renovations; grease trap replacements; and site and recreational improvements, including new home bleachers and press box and asphalt reconstruction and/or replacements; all of the foregoing to include the original furnishings, equipment, machinery, apparatus, and all ancillary and related site, demolition and other work required in connection therewith; and to expend therefor, including preliminary costs and costs incidental thereto and to the financing thereof, an amount not to exceed \$17,130,073; provided that the estimated costs of the components of the Project as set forth in detail in the Plan may be reallocated among such components if the Board of Education shall determine that such reallocation is in the best interests of the District; that a tax is hereby voted in the aggregate amount of not to exceed \$17,130,073 to finance such cost, such tax to be levied and collected in installments in such years and in such amounts as shall be determined by said Board of Education; and that in anticipation of said tax, bonds of the District are hereby authorized to be issued in the aggregate principal amount of not to exceed \$17,130,073 and a tax is hereby voted to pay the interest on said bonds as the same shall become due and payable.



HIGH SCHOOL GYM LOCKERS Showers in the High School gym locker rooms haven’t been used for years. Approval of Proposition #1 would repurpose and renovate this space for proper storage or other uses.

Proposition #1 On Ballot

That the Board of Education of New Paltz Central School District, in the County of Ulster, New York (the “District”), is hereby authorized to construct alterations and improvements to District buildings and sites, substantially as described in a plan prepared by the District with the assistance of H2M Architects & Engineers, and to expend therefor an amount not to exceed the estimated cost of \$17,130,073; that a tax is hereby voted in the aggregate amount of not to exceed \$17,130,073 to finance such cost, such tax to be levied and collected in installments in such years and in such amounts as shall be determined by said Board of Education; and that in anticipation of said tax, bonds of the District are hereby authorized to be issued in the aggregate principal amount of not to exceed \$17,130,073 and a tax is hereby voted to pay the interest on said bonds as the same shall become due and payable.



MS TENNIS COURTS TO BE REMOVED Passage of Proposition #2 would resurface a tennis court and a pickleball court at the Middle School. It would also remove three tennis courts that are in disrepair and fill that area with grass. Six new tennis courts would be established at the High School, ending the practice of transporting High School team members to the SUNY New Paltz courts.

Bond Proposition #2

THAT IN THE EVENT BOND PROPOSITION #1 IS APPROVED, the Board of Education of New Paltz Central School District, in the County of Ulster, New York (the “District”), is hereby further authorized to construct additional alterations and improvements to District buildings and sites (the “Project”), substantially as described in a plan prepared by the District with the assistance of H2M Architects & Engineers, (the “Plan”), which Plan is on file and available for public inspection at the office of the Assistant Superintendent for Business, including air conditioning upgrades and enhancements; auditorium A/V, drainage and irrigation improvements; and athletic and recreational improvements including the installation and/or construction of new turf fields, tennis courts, track and field event venues; field and security lighting, concession and storage facilities, tennis/pickle ball court resurfacing and the acquisition of playground equipment; the foregoing to include the original furnishings, equipment, machinery, apparatus, and all ancillary and related site demolition and other work required in connection therewith; and to expend therefor, including preliminary costs and costs incidental thereto and to the financing thereof, an amount not to exceed \$12,110,992; provided that the estimated costs of the components of the Project as set forth in detail in the Plan may be reallocated among such components if the Board of Education shall determine that such reallocation is in the best interests of the District; that a tax is hereby voted in the aggregate amount of not to exceed \$12,110,992 to pay such cost, said tax to be levied and collected in installments in such years and in such amounts as shall be determined by said Board of Education; that in anticipation of said tax, bonds of the District are hereby authorized to be issued in the principal amount of not to exceed \$12,110,992 and a tax is hereby voted to pay the interest on said bonds as the same shall become due and payable; and that if this Bond Proposition #2 is approved, it shall become effective only in the event that Bond Proposition #1 is approved.

Proposition #2 On Ballot

THAT IN THE EVENT BOND PROPOSITION #1 IS APPROVED, the Board of Education of New Paltz Central School District, in the County of Ulster, New York (the “District”), is hereby further authorized to construct additional alterations and improvements to District buildings and sites, substantially as described in a plan prepared by the District with the assistance of H2M Architects & Engineers, and to expend therefor an amount not to exceed the estimated cost of \$12,110,992; that a tax is hereby voted in the amount of not to exceed \$12,110,992 to pay such cost, said tax to be levied and collected in installments in such years and in such amounts as shall be determined by said Board of Education; that in anticipation of said tax, bonds of the District are hereby authorized to be issued in the principal amount of not to exceed \$12,110,992 and a tax is hereby voted to pay the interest on said bonds as the same shall become due and payable; and that if this Bond Proposition #2 is approved, it shall become effective only in the event that Bond Proposition #1 is approved.

STATE FUNDING PAYS ABOUT

60.7%

OF AIDABLE COSTS

Bond Proposition #3

THAT IN THE EVENT BOND PROPOSITION #1 IS APPROVED, the Board of Education of New Paltz Central School District, in the County of Ulster, New York (the “District”), is hereby further authorized to construct a new Aquatics Center (the “Project”), substantially as described in a plan prepared by the District with the assistance of H2M Architects & Engineers, (the “Plan”), which Plan is on file and available for public inspection at the office of the Assistant Superintendent for Business, including the original furnishings, equipment, machinery, apparatus, and all ancillary and related site, demolition and other work required in connection therewith; and to expend therefor, including preliminary costs and costs incidental thereto and to the financing thereof, an amount not to exceed \$19,219,200; provided that the estimated costs of the components of the Project as set forth in detail in the Plan may be reallocated among such components if the Board of Education shall determine that such reallocation is in the best interests of the District; that a tax is hereby voted in the aggregate amount of not to exceed \$19,219,200 to pay such cost, said tax to be levied and collected in installments in such years and in such amounts as shall be determined by said Board of Education; that in anticipation of said tax, bonds of the District are hereby authorized to be issued in the principal amount of not to exceed \$19,219,200 and a tax is hereby voted to pay the interest on said bonds as the same shall become due and payable; and that if this Bond Proposition #3 is approved, it shall become effective only in the event that Bond Proposition #1 is approved.

Proposition #3 On Ballot

THAT IN THE EVENT BOND PROPOSITION #1 IS APPROVED, the Board of Education of New Paltz Central School District, in the County of Ulster, New York (the “District”), is hereby further authorized to construct a new Aquatics Center, substantially as described in a plan prepared by the District with the assistance of H2M Architects & Engineers, and to expend therefor an amount not to exceed the estimated cost of \$19,219,200; that a tax is hereby voted in the amount of not to exceed \$19,219,200 to pay such cost, said tax to be levied and collected in installments in such years and in such amounts as shall be determined by said Board of Education; that in anticipation of said tax, bonds of the District are hereby authorized to be issued in the principal amount of not to exceed \$19,219,200 and a tax is hereby voted to pay the interest on said bonds as the same shall become due and payable; and that if this Bond Proposition #3 is approved, it shall become effective only in the event that Bond Proposition #1 is approved.



High School Field Bleachers Bleachers at New Paltz High School football field are an old style without backs, and they have been “grandfathered” around current manufacturing standards. Approval of Proposition #1 would replace these with modern bleachers.



Old Boiler Old boilers are either “all on” or “all off,” which leads to inefficiencies when the weather is merely chilly rather than downright frigid. Approval of Proposition #1 would upgrade components of the High School’s boiler system to improve energy/cost efficiency and reliability.

HOW WILL NPCSD DEAL WITH THE CLOSING OF THE SUNY POOL?

NPCSD pays transportation and rental costs so swim teams can practice and compete at the SUNY-New Paltz pool. Renovations will close that pool for about three years starting in summer or fall 2026. If voters approve Proposition #3, the Aquatics Center will not be complete until sometime in 2028. There would be a gap of time during which the NPCSD swim teams would have to use another high school, college, or YMCA.

COULD NEW ATHLETIC FACILITIES BE A SOURCE OF REVENUE?

The district currently pays fees for swim and track athletes to participate in tournaments at other locations, and it has been suggested that NPCSD could rent out the proposed Aquatics Center, turf field and/or running track to generate revenue. However, the Board is not promising or advocating that. Revenue for the potential hosting of competitions is not part of cost estimates.

The pool could be rented to outside organizations that may want to offer swim lessons and open swim sessions, and/or used by the district’s Continuing Education Program, when students or teams are not scheduled.



COMMON QUESTIONS:

1 WHY HOLD THIS VOTE ON JANUARY 16?

NPCSD has been pushing through the long process of getting state approval for a capital project. Some of the problems it would address are immediate needs and drove the decision to hold a vote on January 16. This timeline puts NPCSD on pace to begin work in summer 2026. Delaying the vote, such as to coincide with the May annual budget vote, would push the start time back to summer 2027. The cost of holding this special vote is about \$10,000, and the Board of Education felt this was a reasonable investment for the preferred timeline.

2 CAN RESIDENTS VOTE BY MAIL?

People who are away from New Paltz or don't want to risk inclement weather can vote by mail. See Page 8 for details about Absentee Ballot and Early Mail Ballot applications.

3 HOW DID COMMUNITY INPUT LEAD TO PROPOSITION #3 FOR A POOL?

The NPCSD has a history of listening to the public. While developing a capital project plan, the Board heard repeatedly from community members that a year-round pool would benefit the school and community. Knowing it would be a significant financial investment, the Board decided to put the decision directly into the hands of voters.

4 IF VOTERS APPROVE, WHAT WOULD BE THE TIMELINE?

After voter approval, architects and engineers would submit detailed plans to New York State for approval. The approval process has been taking 30 to 32 weeks. The start of construction work is expected to begin during summer 2026 and be completed by fall 2027 – with the exception of the Aquatics Center. If Proposition #3 passes, we anticipate that the new building would be completed in early 2028.

5 HOW WOULD ACTING NOW PRESERVE THE OPERATING BUDGET?

Repairs to crumbling staircases, renovation of old restrooms and replacing cracked asphalt are examples of critical needs that must be addressed. Doing so through a long-term Capital Project relieves the annual Operating Budget so operating funds can stay focused on classroom needs. (See Page 7 to read how those are different.)

Some of the proposed improvements would relieve the Operating Budget by saving money. Upgrading to LED lighting throughout the district could reduce electric consumption by 50%. At the High School, replacing components of the boiler system would improve energy/cost efficiency.

6 WHY IS A SYNTHETIC TURF FIELD PROPOSED?

Proposition #2 includes a synthetic turf field, along with other improvements to athletic and performing arts facilities that complement the academic programs. There has been much discussion about maintenance costs and recovery times for grass fields, as well as concerns regarding environmental and safety impacts of synthetic turf. The Board's decision to propose a turf field was based on equity and availability.

Floyd Patterson Athletic Field is configured only for football, and the grass field sustains so much wear and tear that it cannot recover enough for other sports to also use it. It is the only field where athletes and fans get to experience an "under the lights" game. A turf field would handle repetitive use and would be striped for multiple sports, giving equal access to football, lacrosse and soccer teams at all levels.

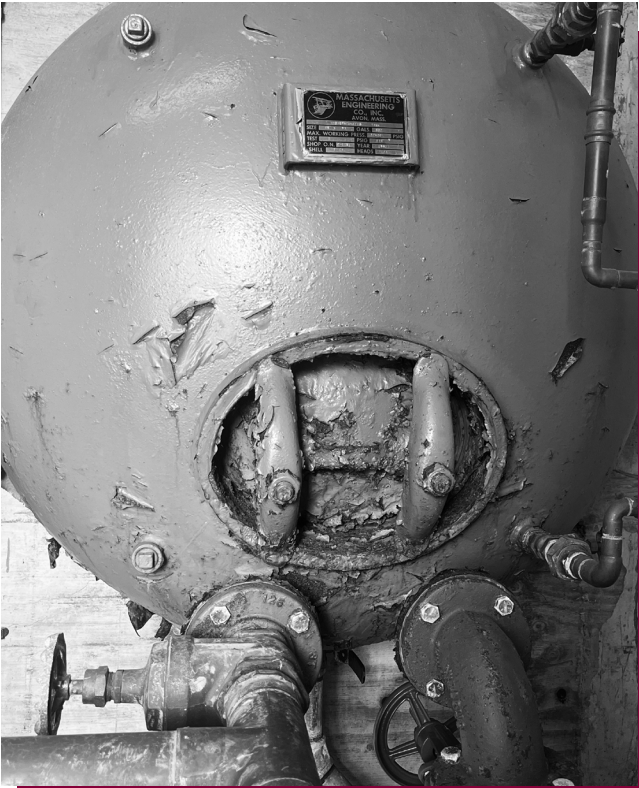


STAIRCASES As the Middle School approaches its 100th year, three exterior staircases would be repaired if voters approve Proposition #1.

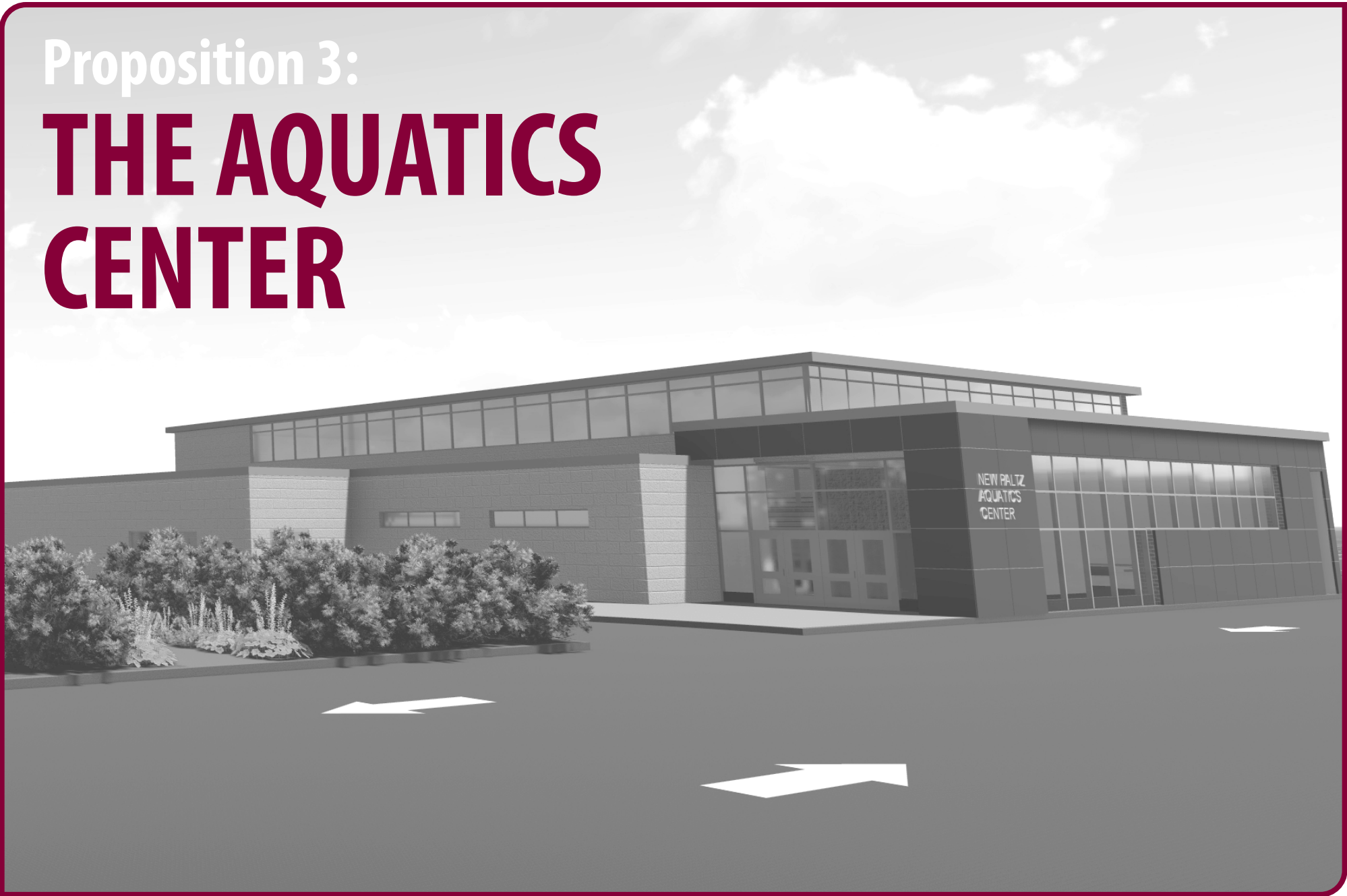
THE ESTIMATED ANNUAL COST FOR A REPRESENTATIVE HOUSE WITH A FULL VALUE OF \$400,000

 Prop. 1: \$70	 Prop. 1 and 2: \$145
 Prop. 1 and 3: \$240	 Prop. 1, 2 and 3: \$312

Find Your Home's "Full Value" at InfoTaxOnline.com



Lenape Water Tank The water storage tank at Lenape Elementary School shows its age with rust and deterioration. Approval of Proposition #1 would replace this critical tank that provides water service to the building,



An Aquatics Center on the New Paltz High School campus would serve the well recognized swim program and expand the ways other students and community members can benefit from a pool.

Proposition #3 of the capital project is entirely focused on the idea of adding another athletic dimension to the High School campus – a stand-alone building between the High School and its football field. The vision calls for:

- AN 8-LANE COMPETITION-SIZED POOL COMPRISED OF MORE THAN 8,300 SQUARE FEET
- BLEACHERS OVERLOOKING ONE SIDE OF THE POOL
- TWO LOCKER ROOMS, RESTROOMS FOR SPECTATORS, STORAGE ROOM AND COACH'S OFFICE
- A 1,700-SQUARE-FOOT LOBBY
- A NEW DROP-OFF LANE FOR VEHICULAR TRAFFIC TO ENHANCE THE EXISTING PARKING LOT

The total budget for construction of the Aquatics Center is \$19,219,200. New York State Building Aid would pay almost 10% -- about \$1.7 million – of that cost. Other financial factors are facility operating costs and savings from reduced swim team transportation. These are not part of the capital project, but they are part of the broader financial picture.

Annual costs to operate and maintain the pool are estimated at \$87,000. That includes utility costs estimated at \$60,000 for heating the pool and building, electricity for running the pumps, lighting, HVAC and dehumidification of the area. Chemicals and routine testing required by the state department of health make up the remaining \$17,000 of estimated operating costs. The cost would increase if the pool were opened to outside groups.

Staff -- including lifeguards, swim instructors, and possibly maintenance workers -- could cost \$200,000 annually.

Student-athletes in grades 7 through 12 are eligible for the High School Swimming and Diving Team. Younger children who swim in recreational programs look forward to suiting up in Huguenot Maroon. Together, that range of ages makes swimming a year-round sport in New Paltz.

Physical education requirements do not include swimming and there is no plan to change that. However, having a pool adjacent to the High School

would open the opportunity to elective courses. NPCSD would anticipate offering swim electives to High School students during the school day. Students will not receive swim lessons on a regular basis during the school day.

In addition to school use, the pool could be rented to outside organizations that may want to offer swim lessons and open swim sessions. The district's Continuing Education Program already relies on school facilities to offer activities that promote wellness and lifelong learning. The pool could be part of that when students or teams are not scheduled.





PROPOSED UPGRADES

New Paltz High School Built in 1968

Proposition #1

- Upgrade lighting to more energy-efficient LED
- Upgrade components of the boiler system that produces heat for the building
- Repair/replace windows as needed
- Repair/replace doors as needed
- Repair gas bibs in science labs where that equipment has reached the end of useful life
- Replace select tiles in corridor ceilings due to age
- Repurpose unused shower space in gym locker rooms, and update those areas with paint and finishes
- Replace old, backless home-side bleachers to meet safety standards at Floyd Patterson Athletic Field
- Improve the field’s ‘Press Box’ used mostly by game announcers

Proposition #2

- Add air conditioning to the auditorium
- Install multi-sport, synthetic turf at Floyd Patterson Athletic Field to create a more level, weather-tolerant surface
- Add lighting to that field
- Install security lighting in that area
- Establish a new, 8-lane running track
- Create six new tennis courts at the High School to balance the removal of courts at the Middle School
- Add a concessions stand, restrooms, a warming area and storage space at the Floyd Patterson Athletic Field
- Replace its old scoreboard
- Replace the football goalposts
- Improve drainage and irrigation for baseball and softball fields

Bus Garage/Facilities Building Built in 1968

Proposition #1

- Remove and replace an old section of rubber roof to maintain building integrity
- Install rooftop snow breaks to protect against falling snow

Lenape Elementary School Built in 1992

Proposition #1

- Upgrade lighting to more energy-efficient LED
- Replace the roof to maintain building integrity
- Repair/replace windows as needed
- Repair/replace doors as needed
- Replace water storage tank to reduce risk of failure
- Repair/replace asphalt where it is cracked
- Replace grease traps

New Paltz Middle School Built in 1930

Proposition #1

- Upgrade lighting to more energy-efficient LED
- Renovate restrooms that have sustained heavy use over about 30 years
- Repair three exterior staircases where mortar is crumbling
- Repair science lab gas bibs that have reached the end of a useful life
- Repair two grease traps

Proposition #2

- Install an audio/visual system in the auditorium
- Add air conditioning to the auditorium
- Demolish three old tennis courts
- Resurface three courts for tennis/pickleball
- Add playground equipment and green space
- Improve drainage around play areas

Duzine Elementary School Built in 1963

Proposition #1

- Upgrade lighting to more energy-efficient LED
- Replace grease traps

THE FINANCIAL BREAKDOWN

Differences Between Capital Project and Operating Budget

A Capital Project is a long-term investment for large-scale building needs. That’s different from the Operating Budget, which is a one-year guide to daily expenses such as salaries, supplies and transportation.

The Operating Budget includes funding for routine preventive maintenance and repairs, but is not intended for major improvements such as widespread upgrades to LED lighting; significant replacement of doors and windows; installation of a new water tank; and multi-site improvement of athletic facilities.

Just as owning a home requires continual upkeep, so do the buildings of New Paltz Central School District.

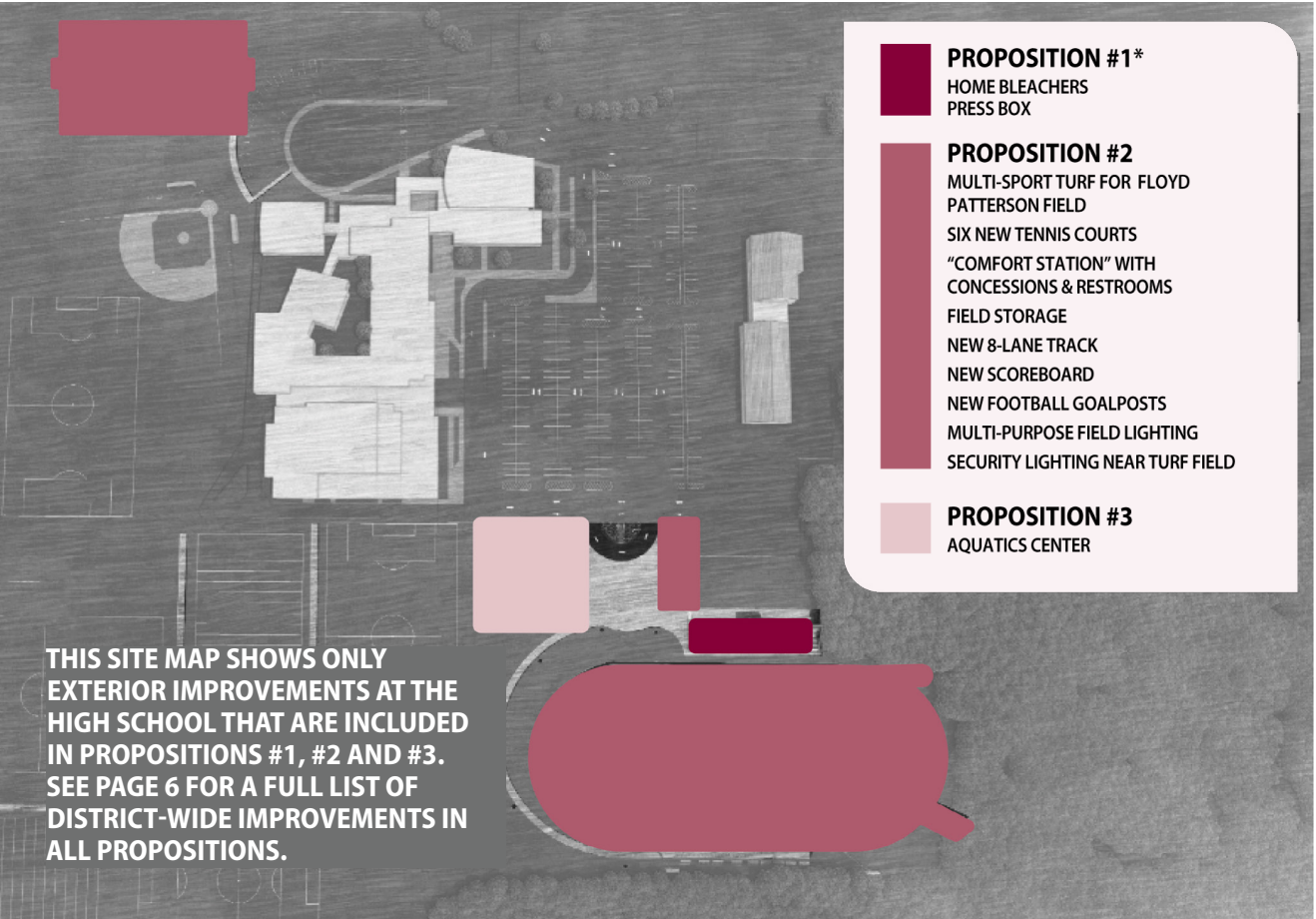
Additionally: Completing this kind of work through a Capital Project would generate state aid to help offset the local tax impact. Borrowing money for a Capital Project would spread repayment costs over many years.



MS Auditorium AV The Middle School auditorium has no audio/visual system. Performances and concerts require equipment to be temporarily assembled or rented. Approval of Proposition #2 would outfit the stage and house with modern sound/lighting systems to enhance the student experience, end rental fees, and make the auditorium more appealing as a community resource.

“Completing important projects would take many years if we attempted to do that through the normal budget process. Adding a pool to the High School campus simply could not be done within that budget. However, a Capital Project would meet needs more quickly, spread costs over time, and bring additional state funding to New Paltz.

Matt Williams, Board of Education



Proposition #1 Prioritizes Safety, Energy, Repairs

Proposed for Borrowing:

\$17,130,073

Total Cost Inc. Principal & Interest:

\$22,950,601

Projected Terms:

14-year bond at 3.50% interest

Items in Proposition #1 are 97% Aidable:

Would Generate \$13,781,765

Total Cost to Taxpayers:

Approximately \$9,168,836

Equates to a 1.16% increase on the tax levy

Estimated cost to taxpayers with a \$400,000 full value home:

\$70.36/year

Proposition #1 & #2 Proposition #1 + Athletic Facilities, MS Auditorium, & AC in Large-Group Areas

Proposed for Borrowing:

\$29,241,065

Total Cost Inc. Principal & Interest:

\$39,172,633

Projected Terms:

14-year bond at 3.50% interest

Items in Proposition #1 & #2 combine to 83.77% Aidable:

Would Generate \$20,317,316 in state aid

Total Cost to Taxpayers:

Approximately \$18,855,317

Equates to a 2.39% increase on the tax levy

Estimated cost to taxpayers with a \$400,000 full value home:

\$144.72/year

Proposition #1 & #3 Proposition #1 + Aquatics Center

Proposed for Borrowing:

\$36,349,273

Total Cost Inc. Principal & Interest:

\$55,212,073

Projected Terms:

19-year bond at 4.0% interest

Items in Proposition #1 & #3 are 50.75% Aidable:

Would Generate \$15,432,732 in state aid

Total Cost to Taxpayers:

Approximately \$39,779,341

Equates to a 3.96% increase on the tax levy

Estimated cost to taxpayers with a \$400,000 full value home:

\$239.76/year

Proposition #1, #2 & #3 Proposition #1 + Athletic Facilities + Aquatics Center

Proposed for Borrowing:

\$48,460,265

Total Cost Inc. Principal & Interest:

\$73,619,876

Projected Terms:

19-year bond at 4.0% interest

Items in Proposition #1, #2, & #3 are 54.33% Aidable:

Would Generate \$21,968,283 in state aid

Total Cost to Taxpayers:

Approximately \$51,651,593

Equates to a 5.15% increase on the tax levy

Estimated cost to taxpayers with a \$400,000 full value home:

\$311.96/year

★

★

HOW TO VOTE

Voter Eligibility

All qualified voters may vote on the Bond Propositions. A qualified voter is any U.S. citizen, 18 years of age or older on the day of the vote, who has resided in the District for 30 days or more immediately prior to the vote.

Applying for an Absentee Ballot or Early Mail Ballot

To obtain either an Absentee Ballot or an Early Mail Ballot, an eligible voter must first fill out an application. Absentee Ballot and Early Mail Ballot applications can be:

- PRINTED FROM THE DISTRICT’S WEBSITE
- PICKED UP IN PERSON AT THE DISTRICT OFFICE (LOCATED AT 1 EUGENE L. BROWN DRIVE, NEW PALTZ) DURING REGULAR SCHOOL HOURS
- REQUESTED BY EMAILING A LETTER TO THE DISTRICT CLERK AT [SERMO@NEWPALTZ.K12.NY.US](mailto:sermo@newpaltz.k12.ny.us)

Please note, the “Application for Absentee Ballot” requires an applicant to

indicate a qualifying reason. By law, the voter’s original signature is required on the Absentee Ballot application or the Early Mail Ballot application, so it must be either delivered to the District Clerk by mail or in person (applications cannot be accepted electronically).

Casting an Absentee or Early Mail Ballot

Upon receipt of a completed application, a ballot will be issued. Absentee Ballots and Early Mail Ballots issued by the District Clerk may only be given to the voter.

If a voter is requesting to have a ballot sent by mail, the completed application must reach the District Clerk by January 9. If a voter is picking up a ballot in person, applications must be received by January 15.


To be counted, a completed ballot must be received by the District Clerk by the strict deadline of 5 PM on Thursday, January 16.

Voting Location


Polls will be open for in-person voting on Thursday, January 16, from 7 AM to 9 PM at New Paltz High School Gymnasium.

Learn More:

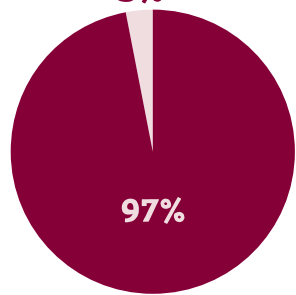
For more questions about voting, contact **District Clerk Sandra Ermo:**



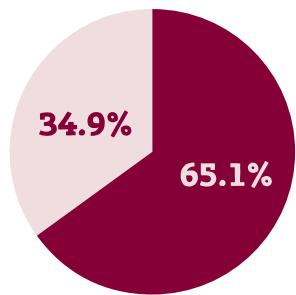
(845) 256 - 4020



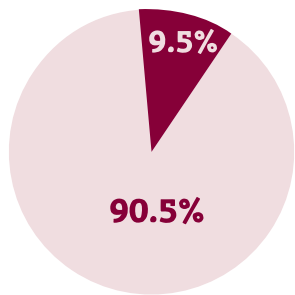
sermo@newpaltz.k12.ny.us



PROP. 1



PROP. 2



PROP. 3

State Aid

Local Share

Only Proposition #1 is independent; the others require that Proposition #1 passes. However, to fully inform the public, these three pie charts show the percentage of each proposition that would be paid through NY State Aid versus local taxes.

THE POWER OF STATE AID

PROP. 1	60%	40%
PROP. 1 + 2	52%	48%
PROP. 1 + 3	28%	72%
PROP. 1, 2 + 3	30%	70%

State Aid

Local Share

Across all three propositions, state funding would pay about 60% of costs for projects that qualify for state aid. That percentage varies by proposition, as this chart shows for each option voters have on Jan. 16. These percentages reflect the costs of improvements and interest, as well as state aid that would offset those.

★

★

★

★

★

INFORMATION SESSIONS:

January 8

5:30 PM Coffee or Tea with the BOE

6:30 PM Capital Project Presentation and Q&A

NP Middle School

196 Main Street, New Paltz

January 13 @ 7 PM

Jewish Community Center

30 N Chestnut Street, New Paltz

BOND PROPOSITION VOTE:
THURSDAY, JANUARY 16, 2025

Superintendent of Schools
Stephen Gratto

Assistant Superintendent for Business
Debra Kosinski

Board of Education
Matthew Williams, President
Liz Bonhag, Vice President
Jason Clark
Heather Kort
Glenn LaPolt
Olivia Treubig
Jason Seweryn

www.newpaltz.k12.ny.us

This newsletter was printed on recycled paper.

VOTE

THURSDAY
JANUARY 16, 2025

7AM - 9PM @
New Paltz High School

Questions About Any Proposition?

EMAIL: capitalproject@newpaltz.k12.ny.us OR VISIT: www.newpaltz.k12.ny.us/capitalproject